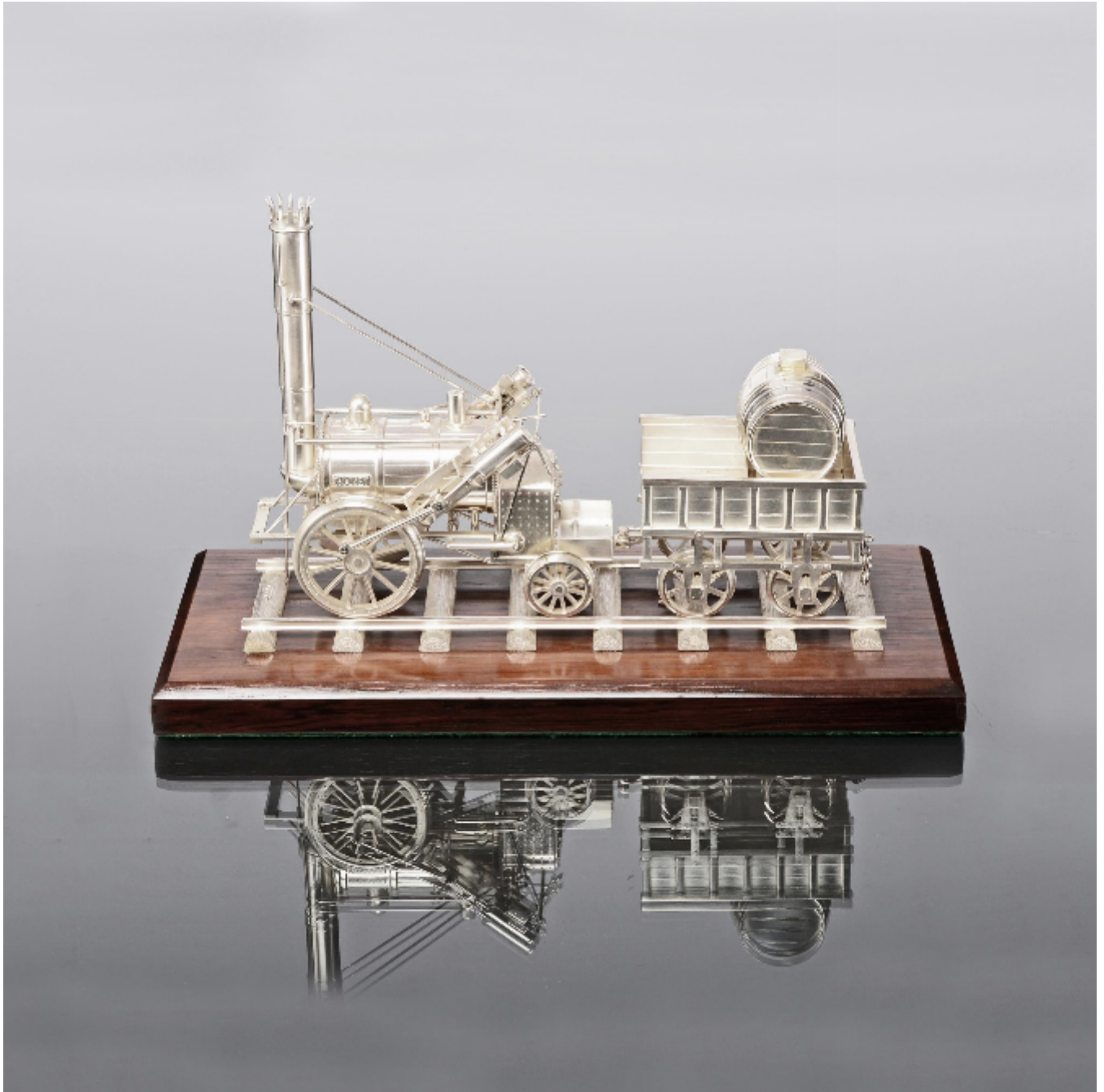


# LANGFORDS

Antique & Contemporary Silver

Bespoke: sterling silver model of Stephenson's Rocket  
Langfords



REF: 7029

Height: 175 mm (6.89")

Width: 250 mm (9.84")

Depth: 76 mm (2.99")

Weight: 1057 g

## Description

An accurate and beautifully made recreation in silver of Stephenson's Rocket - the early steam locomotive designed and built in by Robert Stephenson in 1829 in Newcastle. Although it was not the first steam locomotive, it was the first to bring together several innovations to produce the most advanced locomotive of its day and became the template for most steam engines in the following 150 years.

This model employed all the silversmith's talents over many weeks to produce such a fine silver model locomotive. Every detail of this unique model has been captured and the various modelling and silversmithing skills that go into making such a fine piece have been incorporated into the construction.

Many of the parts are first fashioned in wax, and moulds made from which castings are produced, filed, hand chased and eventually assembled. Sheet silver is shaped into various forms and the engraver will pick out the detail of parts, adding realism and authenticity to the final piece. A final polish completed this excellent and unique silver commission.

The dimensions shown are for the model itself and do not include the wooden base or tracks.

This is an example of a bespoke commission. Get in touch to discuss your own ideas; we make anything in silver.