

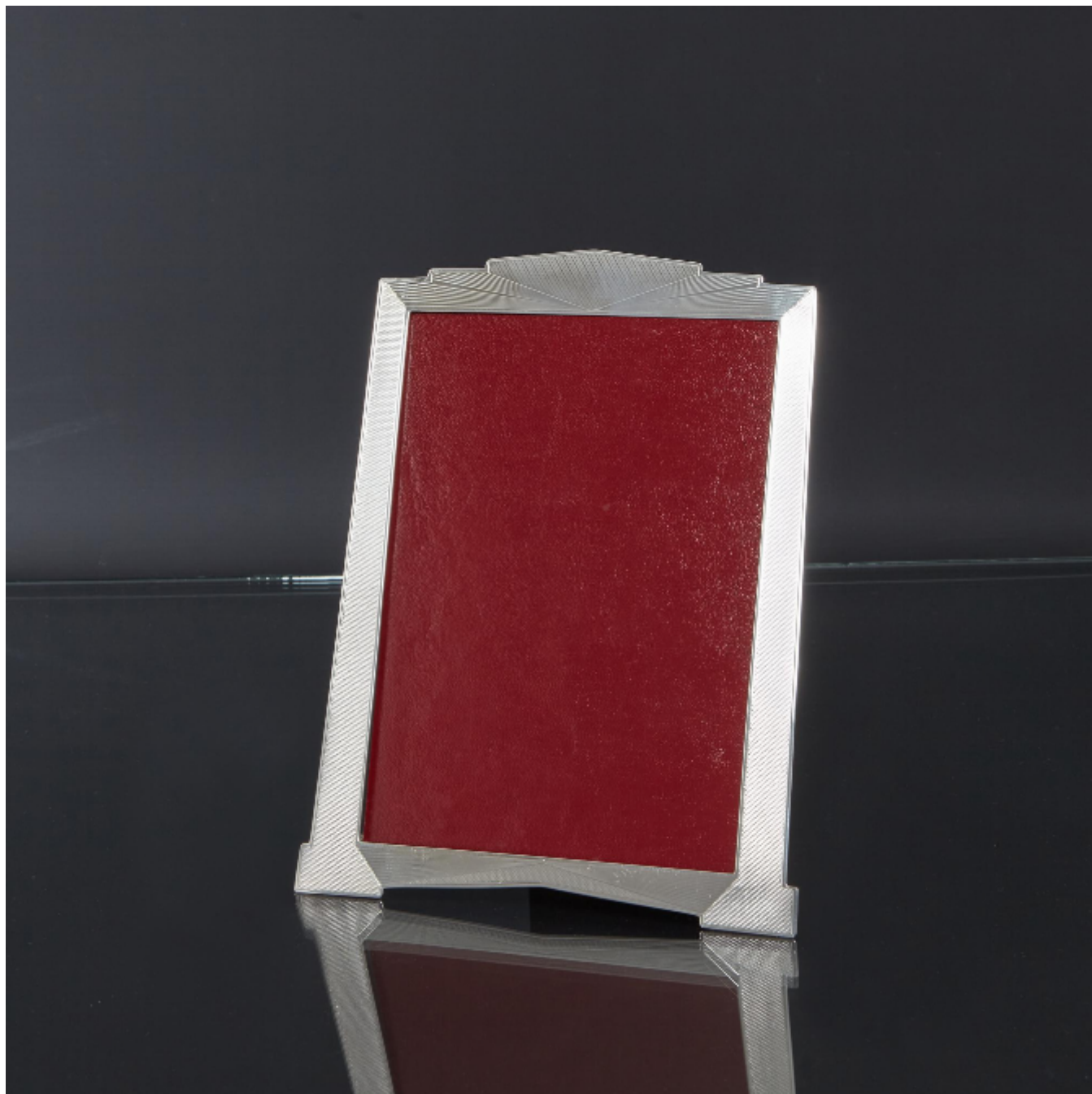
# LANGFORDS

Antique & Contemporary Silver

## Art Deco silver photograph frame

Henry Matthews

Sold



REF: 7125

Height: 220 mm (8.66")

Width: 170 mm (6.69")

## Description

Very good quality handmade Art Deco period silver photo frame, perfect for a 7" x 5" portrait style photograph. The fascia has been designed in a stylised form with tapering sides, a chevron base and stepped top, all decorated with engine-turned lattice pattern and stylised sunburst panels. The frame is fitted with a hardwood back and easel.

Art Deco was a popular design style in the 1920s and '30s characterised especially by sleek geometric or stylised forms. It represented luxury, glamour, exuberance, and faith in social and technological progress.